



**한국전기안전공사**  
**안전인증센터**

**시험 성적서**  
**TEST REPORT**



KESCO Safety Test Center  
Tel : 82-31-240-4500 Fax : 82-31-240-4590

성적서 번호: STC-B09-016-1  
(Report No.)

페이지(Page of) : ( 1 ) / ( 총 7 )

**1. 신청자 :**

Customer

- 기관명 : (주)윈포넷  
Name Win4Net Co., Ltd.
- 주소 : 경기도 안양시 호계동 1027-5 번지  
Address 1027-5, Hogye-dong Dongan-gu, Anyang-si Gyeonggi-do, Korea
- 의뢰일자 : 2009. 01. 08  
Date of Receipt

**2. 시험성적서 용도 : 품질관리용**

Use of Test Report Quality assessment

**3. 시험대상품목 : Speed Dome Camera**

Product(s)

- 모델명 : QT-10 Series (4 페이지 참조)  
Type Designation(s)
- 제조번호 : Not applicable  
Serial No(s).

**4. 시험기간 : 2009. 01. 08 ~ 2009. 01. 13**

Date(s) of performance of test

**5. 시험항목/방법 : IEC 60529: 2001 / IP66**

Test Item(s)/Method(s)

**6. 시험환경**

Test Environment

- 온도 : (18 ± 3) °C  
Temperature
- 상대습도 : (35 ± 5) % R. H.  
Relative Humidity

**7. 시험결과 : 적합**

Test Result Pass

<b>확 인</b> Conformation	작성자 Tested by	승인자 Approved by	직책: 기술책임자 Position
	성명 석현일 (서명)	성명 오정훈 (서명)	
	Name H. I. Sok Signature	Name J. H. Oh Signature	

2009. 01. 15

**한국전기안전공사 안전인증센터장**  
The head of Korea Electrical Safety Corporation Safety Test Center



- 위 성적서는 고객이 제공한 시료에 대한 시험 결과이며, 용도이외의 사용은 금합니다.  
This is certified that the above mentioned products have been tested for the sample provided by customer and forbid the use except for original purpose.
- 위 성적서는 안전인증센터의 승인 없이는 복제 및 재발급이 금지됩니다.  
No part of this document may be duplicated or reproduced by any means without the express written permission of the KESCO Safety Test Center.

440-819 경기도 수원시 장안구 영화동 338-1  
338-1, Yeonghwa Dong, Jangan Gu, Suwon City, Gyeonggi Do, 440-819, Korea

# TEST DATA

IEC 60529: 2001



Safety Test Center

Report No.: STC-B09-016-1 Customer: Win4Net Co., Ltd.  
Page No.: 2 / 7 Product: Speed Dome Camera  
Model: QT-10 Series

## 1. 시험 환경 (Test Environment)

- 온도 (Temperature):  $(18 \pm 3) ^\circ\text{C}$ , 습도 (Relative Humidity):  $(35 \pm 5) \% \text{ R. H.}$
- 시험장소 (Location): Dust Chamber, IP 주수 시험장 (IP Water Test Lab.)

## 2. 시험에 사용된 장비 명세 (List of Used Equipment)

장비번호 Equipment	사용장비명 Description	제조회사 Manufacturer	형식 Model	제조번호 Serial No.	교정유효일자 Calibration Valid Until
A-74-01	Dust Chamber	PTL	P14	5040172	2009. 07. 05
A-75-04	Jet Nozzle	ED & D	JET-03	W0750119	2009. 03. 13
B-01-01	Stop Watch	Time Art	PC-80A	TPST002	2009. 11. 05

## 3. 시험일자 (Test Date)

Date of receipt of test item.....:	2009. 01. 08
Date(s) of performance test.....:	2009. 01. 08 ~ 2009. 01. 13

## 4. 시험 조건 (Test Condition): IP66

## 5. 시험 결과 (Test Result): Pass

### 1) Dust Test

#### Test results for dust protection (first characteristic numeral 6)

##### Description of test:

##### 1. Degree of protection.

No ingress of dust

##### 2. Category for enclosure;

Category 1

Category 2

Category 1 and Category 2

##### 3. Testing method:

- The talcum powder used shall be able to pass through a square-meshed sieve the nominal wire diameter of which is  $50 \mu\text{m}$  and the nominal width between wires was  $75 \mu\text{m}$
- The amount of talcum powder was 2 kg per cubic meter of the chamber volume.
- The amount of talcum powder to be used is 2 kg per cubic metre of the test chamber volume.

Category 1

If an extraction rate of 40 to 60 volumes per hour is obtained the duration of the test is 2 h

# TEST DATA

IEC 60529: 2001



Safety Test Center

Report No.: STC-B09-016-1 Customer: Win4Net Co., Ltd.  
Page No.: 3 / 7 Product: Speed Dome Camera  
Model: QT-10 Series

- If, with a maximum depression of 2 kPa (20 mbar), the extraction rate is less than 40 volumes per hour, the test is continued until 80 volumes have been drawn through, or a period of 8 h has elapsed.

#### 4. Test condition

The enclosure shall be deemed category 1 whether reductions in pressure below the atmospheric pressure are present or not.

#### 5. Acceptance conditions

The protection is satisfactory if no deposit of dust is observable inside the enclosure at the end of the test.

#### 6. Test result: Pass

## 2) Water Test

### Test results for water protection (second characteristic numeral 6)

#### Description of test

##### 1. Degree of protection.

Water from projected by a nozzle against the enclosure from any direction shall have no harmful effect

##### 2. Testing method:

- The test was made by spraying the enclosure from all practicable directions with a stream of water from a standard test nozzle
- Nozzle internal diameter: 12,5 mm
- Delivery rate: 100 L/min  $\pm$  5 %
- Water pressure: to be adjusted to achieve the specified delivery rate
- Test duration per square metre of enclosure surface area likely to be sprayed: 1 min
- Minimum test duration: 3 min
- Distance from the nozzle to the enclosure surface: between 2,5 m and 3 m

##### 3. Acceptance conditions:

Dielectric strength test: N/A

It shall not;

- be sufficient to interfere with the correct operation of the equipment for impair safety;
- deposit on insulation parts where it could lead to tracking along the creepage distances;
- reach live parts or windings not designed to operate when wet;
- accumulate near the cable end or enter the cable if any.

#### 4. Test result: Pass

# TEST DATA

IEC 60529: 2001



Safety Test Center

Report No.: STC-B09-016-1  
Page No.: 4 / 7

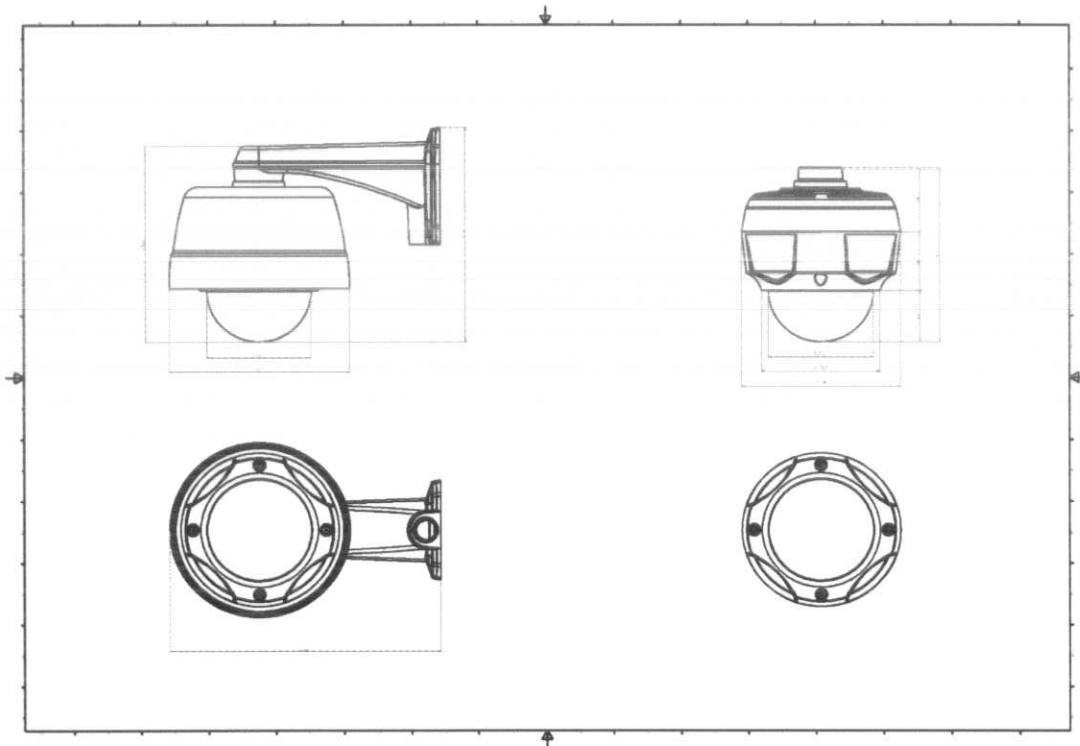
Customer: Win4Net Co., Ltd.  
Product: Speed Dome Camera  
Model: QT-10 Series

## 6. 적용모델 (Applicable models)

적용 모델간에는 동일한 Frame 을 사용하며, Network 지원유무, 신호형태에 따라 모델명이 차이가 있으며, 각 모델명은 아래와 같음.

**Model name: QT-10TN / QT-10TP / QT<sup>on</sup>-10TN / QT<sup>on</sup>-10TP**

## 7. 제품 구성도 (Schematic)



# Photo Documentation

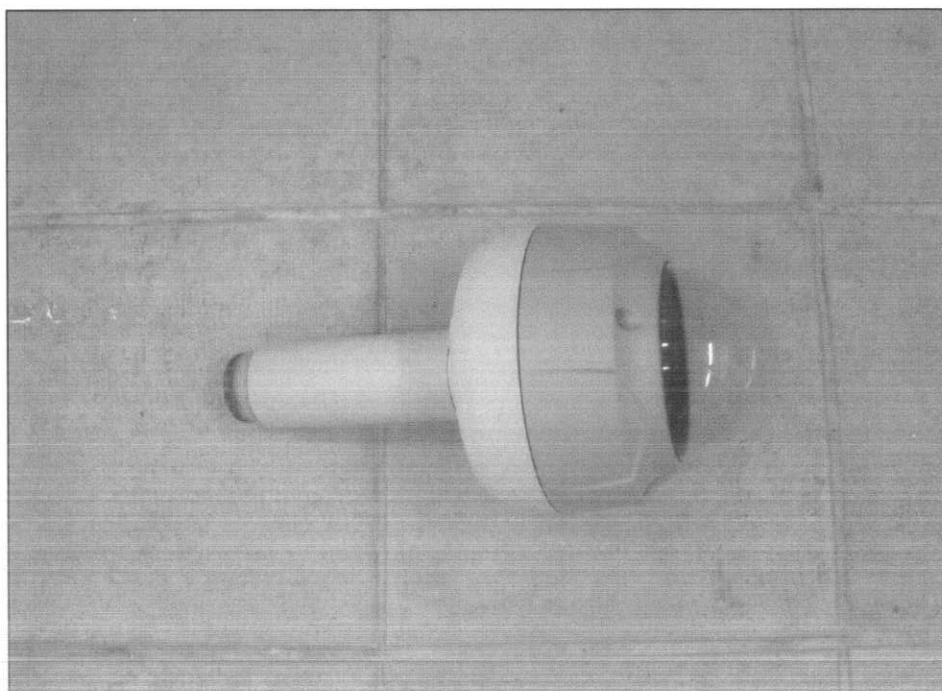
Report No.: STC-B09-016-1

Page No.: 5 / 7

Customer: Win4Net Co., Ltd.

Product: Speed Dome Camera

Model: QT-10 Series



[Sample]

## 1. Test Condition (IP Test)

- Test Date: 2009. 01. 08 ~ 2009. 01. 13
- IP Code: IP66
- 1) Dust test for first characteristic numeral 6
  - Depression: 20 mbar
  - Duration of time: 8 h
- 2) Water test for second characteristic numeral 6 with the 12,5 mm nozzle
  - Internal diameter of the nozzle: 12,5 mm
  - Delivery rate: 100 L/min
  - Duration of time: 3 min

## 2. Applicant & Model

- Win4Net Co., Ltd. / Speed Dome Camera (QT-10 Series)

## 3. Test Equipment

- A-74-01, A-75-04, B-01-01

# Photo Documentation

Report No.: STC-B09-016-1  
Page No.: 6 / 7

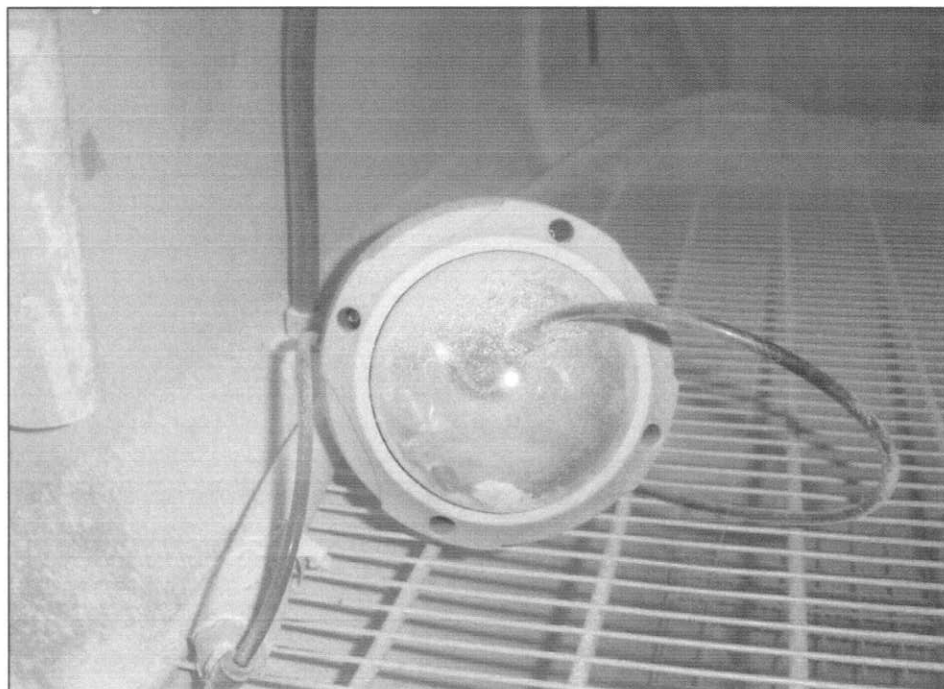
Customer: Win4Net Co., Ltd.  
Product: Speed Dome Camera  
Model: QT-10 Series

## 4. Test Figure

### 1) Dust Test



[Before Test]



[After Test]

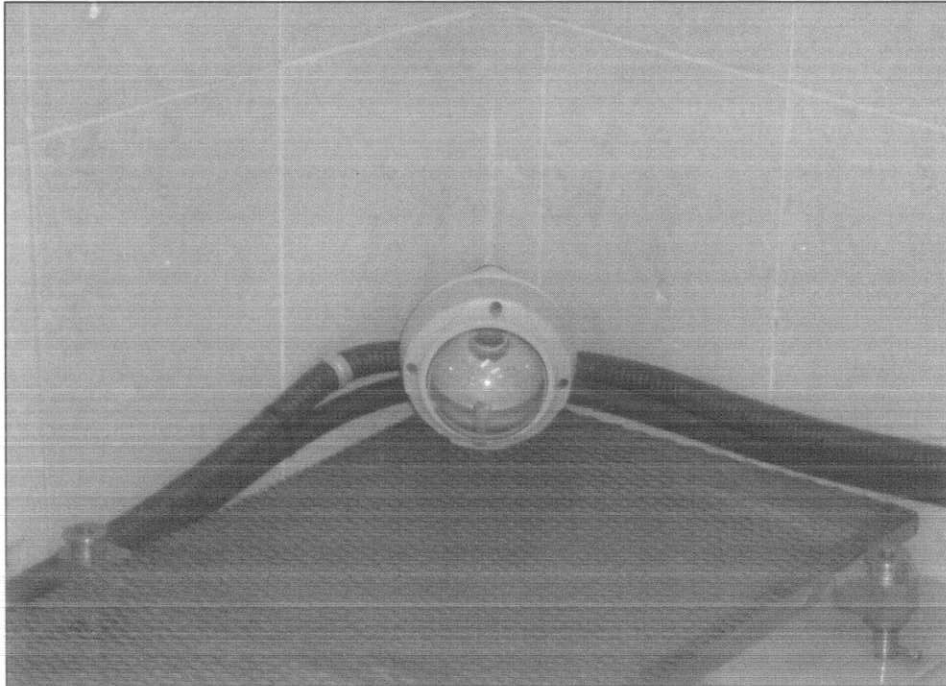
# Photo Documentation

**KEICO**  
Safety Test Center

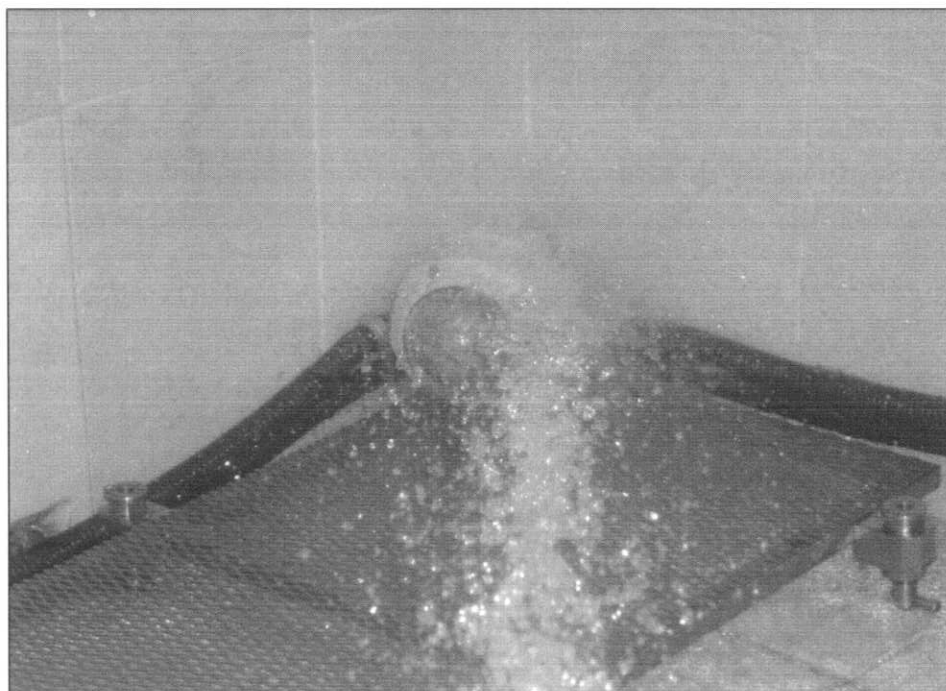
Report No.: STC-B09-016-1  
Page No.: 7 / 7

Customer: Win4Net Co., Ltd.  
Product: Speed Dome Camera  
Model: QT-10 Series

## 2) Water Test



[Before Test]



[During Test]